

# MAQUET

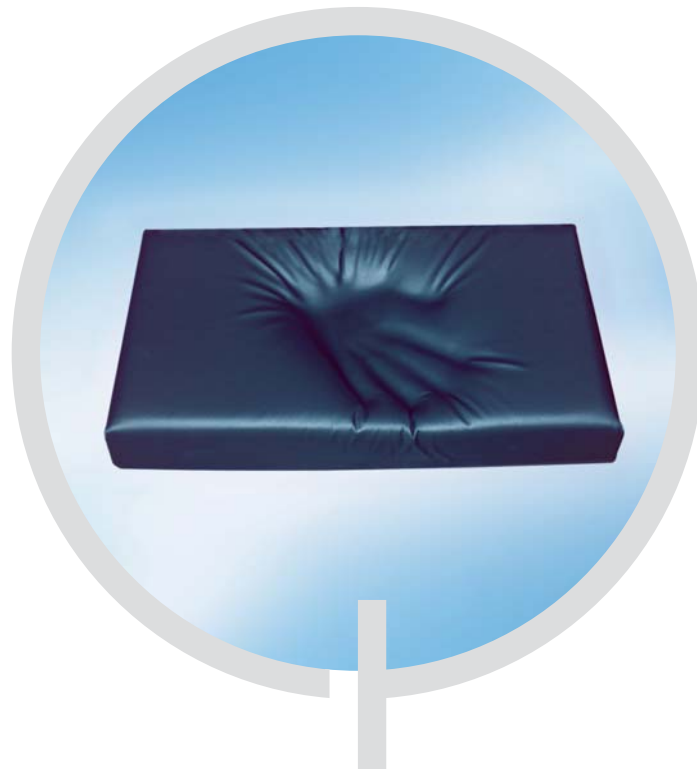
COMFORT AND DECUBITUS  
PREVENTION IN THE OR  
SFC CUSHIONS

SURGICAL WORKPLACES





**REDUCING PRESSURE  
REDUCING THE RISK OF DECUBITUS  
MAQUET – THE GOLD STANDARD**



**MAQUET is one of the world's leading manufacturers of medical equipment** for the equipment of operating theatres and intensive-care wards. MAQUET invests specifically in research and development to meet the daily challenges faced by clinics and hospitals. handy and practical products create maximum safety and comfort for patients, thereby contributing to the best possible care outcome.

**OR table cushions to a new quality** optimise patient comfort, dedicated workshops in the Surgical Academy provide the latest skills in patient care. MAQUET provides solutions for the best possible treatment of patients, making themselves well worthwhile for use in hospitals.

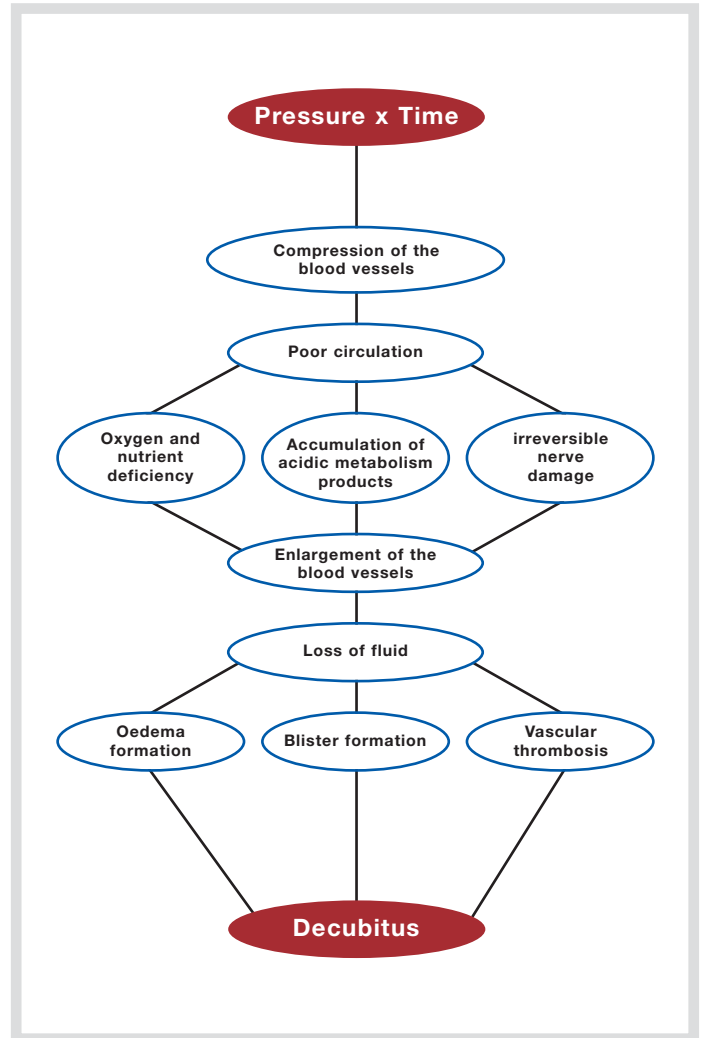
MAQUET – The Gold Standard.

## MAQUET CUSHIONS FOR OPERATION AND PATIENT TRANSPORT

**With the new SFC cushions** (Soft Foam Core) from MAQUET, the main cause of decubitus is significantly reduced. MAQUET offers improved cushion quality. The 60 mm thick visco-elastic foam is glued to a 20 mm thick lower layer of EPDM plastic (Ethylene Propylene Diene Monomer), giving a total thickness of 80 mm. This combination of visco-elastic foam and EPDM ensures optimum pressure distribution, providing effective protection against the patient lying on the supporting plate.

### The special properties of MAQUET SFC cushions:

- Excellent pressure distribution
- Safe and stable patient position
- Protection against contact with metallic surfaces
- Reduction of shear forces
- Ultrasonically-welded seamst
- Low-cost
- Easy to clean
- Electrically conductive to international Norm IEC 60601-1
- Latex-free
- X-ray compatible
- CE conformity to Directive 93/42 EWG



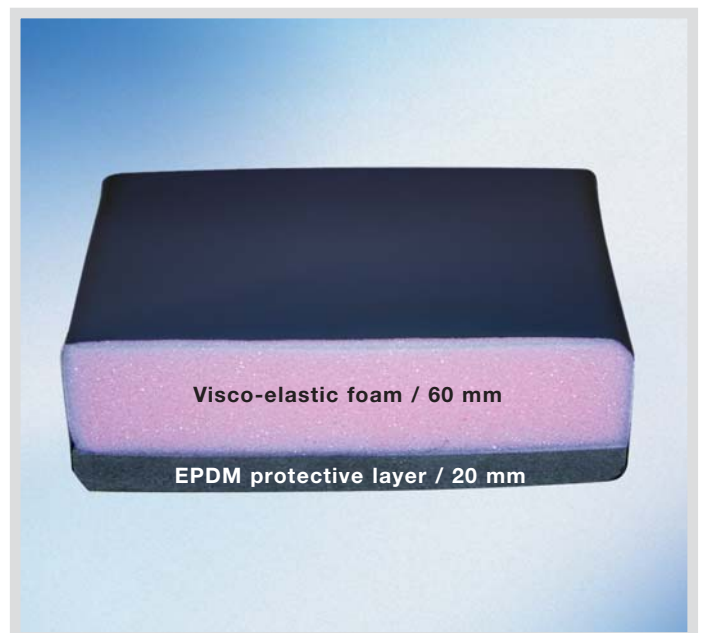
Formation of decubitus

Source: IGAP  
 Institut für Innovationen im Gesundheitswesen und angewandte  
 Pflegeforschung (Institute for Innovation in Health and Applied Care  
 Research)

**Specially for angled support positions** the sandwich construction protects the patient against contact with the edges of the support plate and the metal joints. The advantageous, moulding properties of the cushion are retained completely.



**Soft is not enough:** The 80 mm thick SFC cushion comprises a multi-layer construction. The visco-elastic foam ensures distribution of the weight over the largest possible area. The EPDM protective layer of the sandwich core provides effective protection against the patient lying on the supporting plate. During load changes, air circulates unhindered via a patented membrane on the underside of the cushion. This semi-permeable membrane simultaneously prevents the ingress of moisture. The bi-elastic cover fabric reduces creases and shear forces.



## PRESSURE REDUCTION THROUGH OPTIMUM DISTRIBUTION

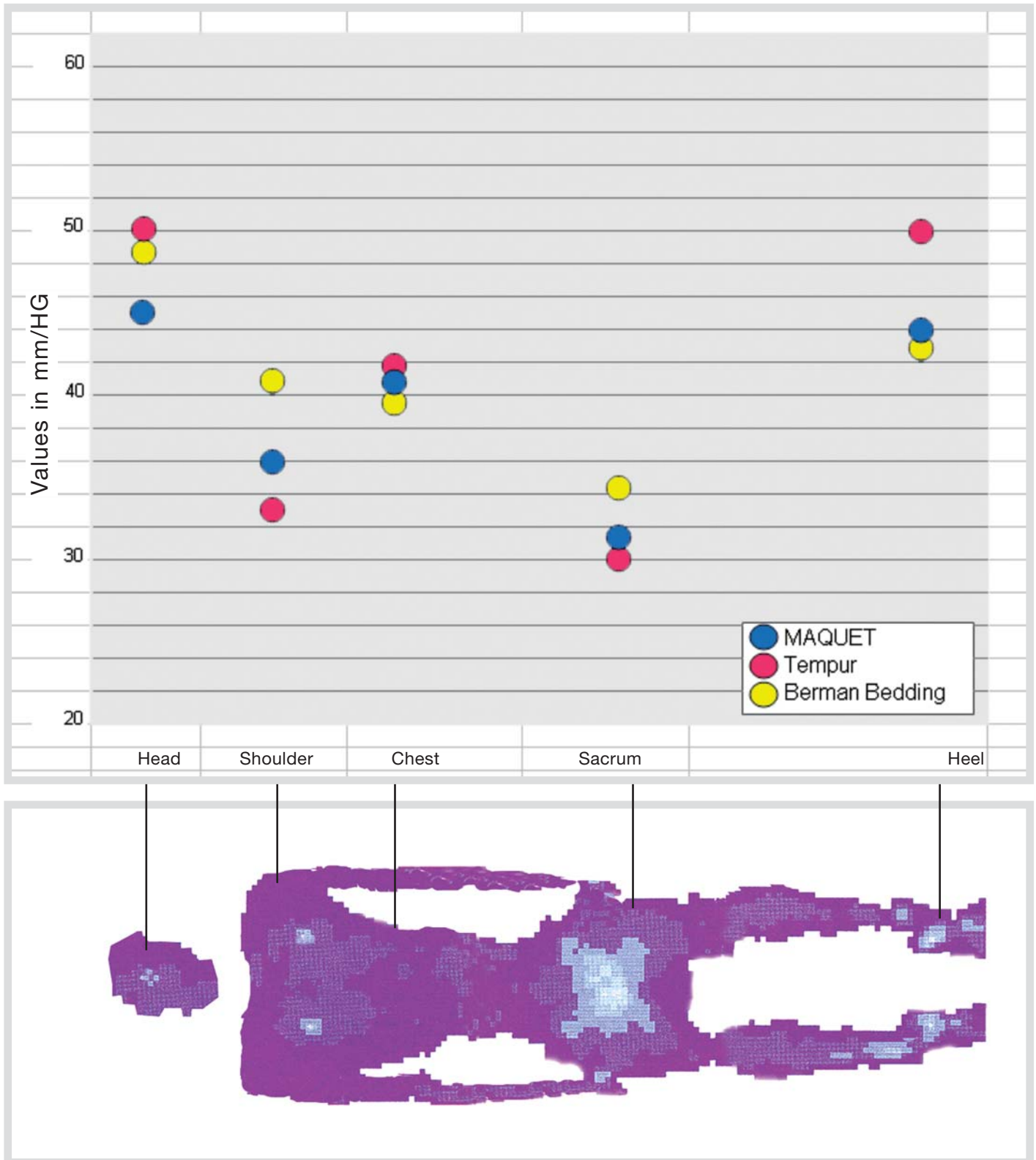


Diagram measured by the "Institut Novel GmbH" in Munich, 10/2004

**The actual pressure values** for the OR table cushions were measured by the “Institut Novel GmbH” in Munich.

**The following products were tested:**

MAQUET 80 mm SFC:	39.20 mmHg
Tempur 70:	40.92 mmHg
Berman Bedding:	41.24 mmHg

These consist of arithmetical mean values measured at the head, shoulder, chest, sacrum and heel.



**Patients placed on MAQUET SFC cushions** sink into the underlay due to their body weight and body temperature. The SFC cushion moulds itself individually to the body, thereby increasing the contact surface by up to 60 %. The visco-elastic and thermo-active properties of SFC cushions have been proven to reduce pressure by means of optimum pressure distribution.

**Physiological stability of the patient through own body warmth:** Research results show that patients in the OR often suffer from hypothermia. This frequently results in increased care requirements and cost-intensive supervision. SFC cushions store the patient's own body warmth, and reduce the risk of hypothermia.

**For local contact:**

Please visit our Website  
[www.maquet.com](http://www.maquet.com)

# MAQUET

MAQUET GmbH & Co. KG  
Kehler Straße 31  
D-76437 Rastatt, Germany  
Phone: +49 (0) 7222 932-0  
Fax: +49 (0) 7222 932-571  
Service-Hotline: +49 (0) 7222 932-745  
[info.sales@maquet.de](mailto:info.sales@maquet.de)  
[www.maquet.com](http://www.maquet.com)

## GETINGE

GETINGE Group is a leading global provider of equipment and systems that contribute to quality enhancement and cost efficiency within healthcare and life sciences. We operate under the three brands of ArjoHuntleigh, GETINGE and MAQUET. ArjoHuntleigh focuses on patient handling and hygiene, disinfection, DVT prevention, medical beds, therapeutic surfaces and diagnostics. GETINGE provides solutions for infection control and prevention within healthcare and life sciences. MAQUET specializes in therapeutic applications, products, solutions and services for OR and ICU.